

Textwebb

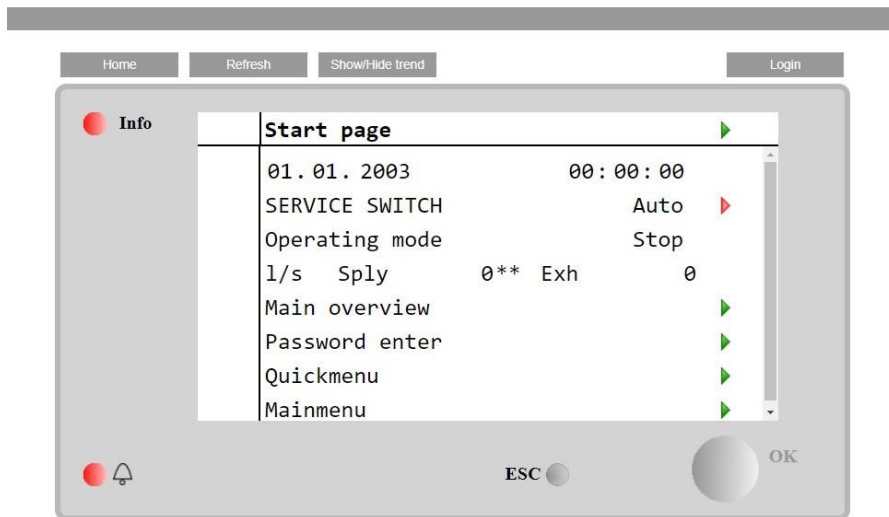
Textwebb can be used to connect to an AHU that is connected to the same local network as your computer / telephone.

The control panel looks different depending on which version of the Climatix control unit is in the control cabinet.

1.	Textwebb AHU POL.638	2
2.	Textwebb AHU POL.648	3
3.	Textwebb EHP POL.638	5
4.	Textwebb EHP POL.648	6

1. Textwebb AHU POL.638

Climatix handheld terminal is simulated on the web and the handheld terminal's functions and menus can be managed.



Follow these steps to connect:

Log in with PIN 2000.

Connect *the network cable into the network socket* (Ethernet), go into menu (-V3.56) *Mainmenu -> System settings -> Communications -> IP-config:*

Read the IP address of your unit.

Enter the IP address in your browser (which must be connected to the same network).

User name: **IVP**

Password: **IVP**

To edit the most common parameters e.g. setpoints, temperatures etc., use login 1000 (basic permission level).

For cases where additional parameters and setpoints need to be edited, use login 2000 (normal permission level).

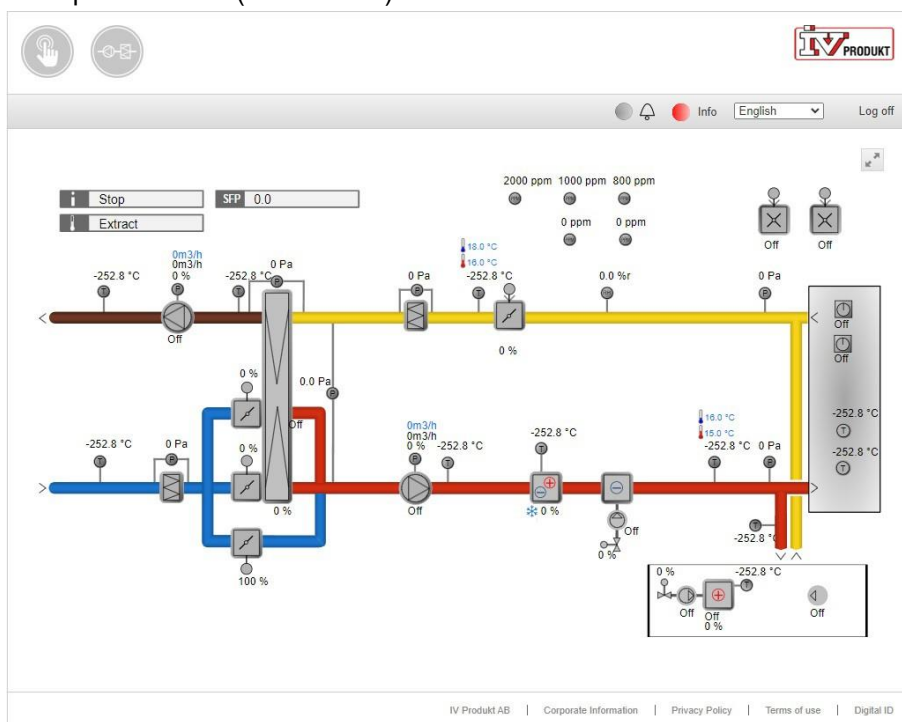
We do not recommend using Internet Explorer as this browser does not work satisfyingly. Use one of the following browsers: Microsoft Edge, Google Chrome or Mozilla Firefox.

2. Textwebb AHU POL.648

Climatix handheld terminal is simulated on the web and the handheld terminal's functions and menus can be managed.



Principle flow chart (from V4.24-)



Follow these steps to connect:

Log in with PIN 2000. If you have a Touch panel, see instructions for logging in here: [Log in on Touch panel](#).
Select "Operations" on the Touch screen to access the menu options below)

Connect the network cable into the network socket (Ethernet), go into menu
(-V3.56) Mainmenu -> System settings -> Communications -> IP-config:
(V4.00-V4.22) Mainmenu -> System settings -> Communications -> IP-config:
(V4.24-) System settings -> Communications -> IP-config:

Read the IP address of your unit.

Enter the IP address in your browser (which must be connected to the same network).

User name: **IVP**

Password: **IVP**

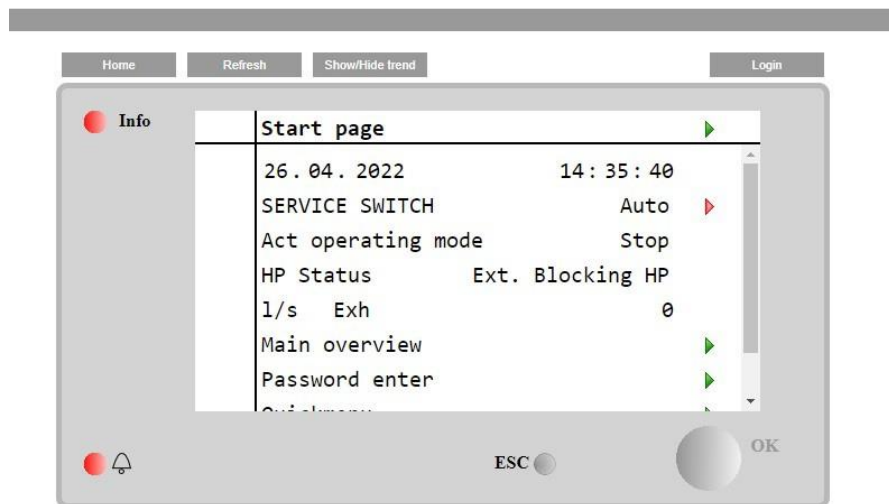
To edit the most common parameters e.g. setpoints, temperatures etc., use login 1000 (basic permission level).

For cases where additional parameters and setpoints need to be edited, use login 2000 (normal permission level).

We do not recommend using Internet Explorer as this browser does not work satisfyingly. Use one of the following browsers: Microsoft Edge, Google Chrome or Mozilla Firefox.

3. Textwebb EHP POL.638

Climatix handheld terminal is simulated on the web and the handheld terminal's functions and menus can be managed.



Follow these steps to connect:

Log in with PIN 2000.

Connect *the network cable into the network socket* (Ethernet), go into menu (-V3.56) *Mainmenu -> System settings -> Communications -> IP-config:*

Read the IP address of your unit.

Enter the IP address in your browser (which must be connected to the same network).

User name: **IVP**

Password: **IVP**

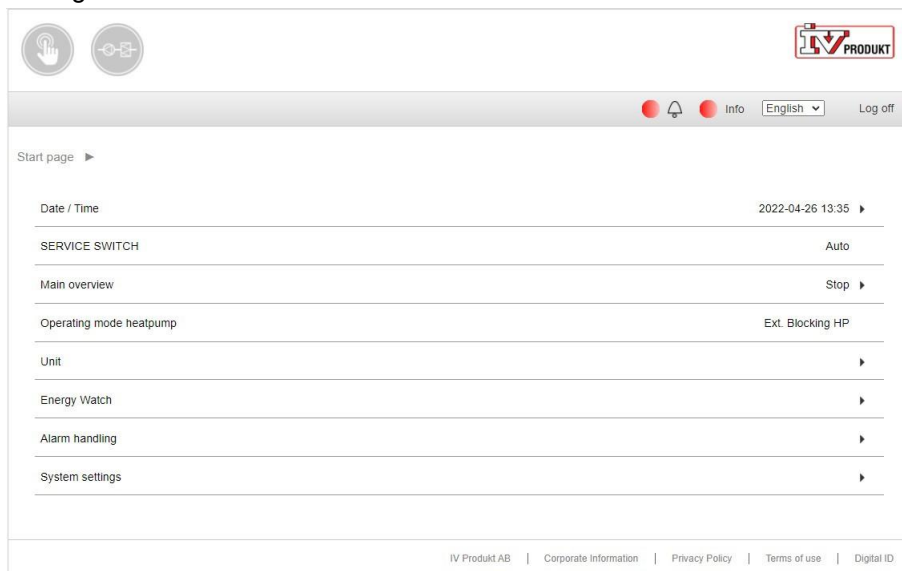
To edit the most common parameters e.g. setpoints, temperatures etc., use login 1000 (basic permission level).

For cases where additional parameters and setpoints need to be edited, use login 2000 (normal permission level).

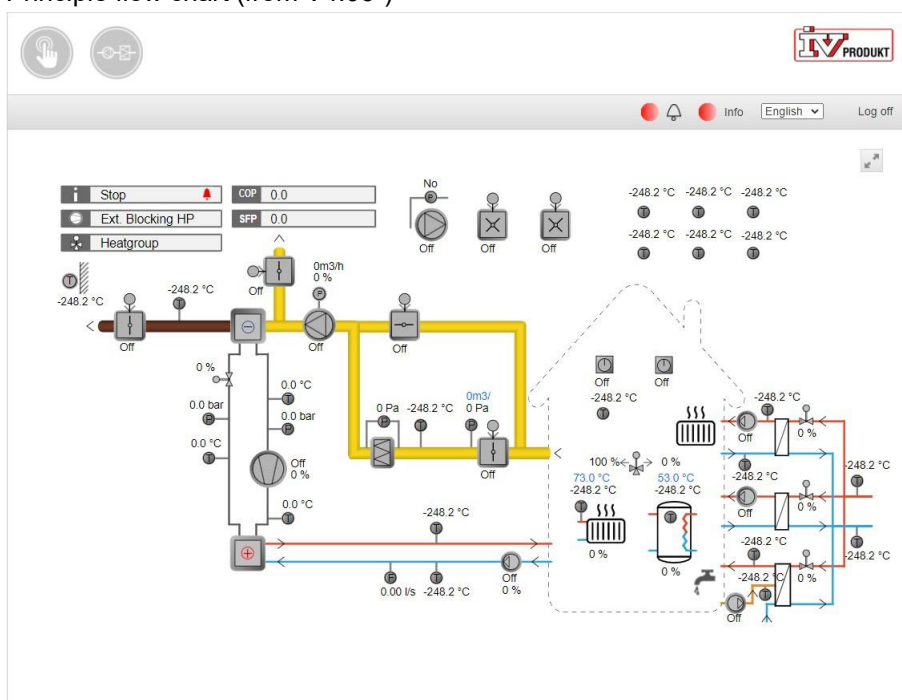
We do not recommend using Internet Explorer as this browser does not work satisfyingly. Use one of the following browsers: Microsoft Edge, Google Chrome or Mozilla Firefox.

4. Textwebb EHP POL.648

Climatix handheld terminal is simulated on the web and the handheld terminal's functions and menus can be managed.



Principle flow chart (from V4.06-)



Follow these steps to connect:

Log in with PIN 2000. (If you have a Touch panel, see instructions for logging in here: [Log in on Touch panel](#). Select "Operations" on the Touch screen to access the menu options below)

Connect *the network cable into the network socket* (Ethernet), go into menu

(V4.06-) *System settings -> Communications -> IP-config:*

Read the IP address of your unit.

Enter the IP address in your browser (which must be connected to the same network).

User name: **IVP**

Password: **IVProdukt!**

To edit the most common parameters e.g. setpoints, temperatures etc., use login 1000 (basic permission level).

For cases where additional parameters and setpoints need to be edited, use login 2000 (normal permission level).

We do not recommend using Internet Explorer as this browser does not work satisfyingly. Use one of the following browsers: Microsoft Edge, Google Chrome or Mozilla Firefox.